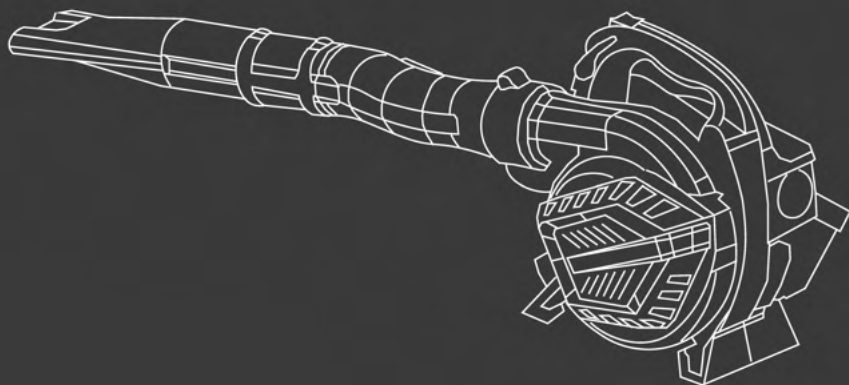


HYUNDAI
POWER PRODUCTS



LEAF BLOWER, VACUUM & SHREDDER HYBV2600X

Instruction Manual



INDEX

	CONTENTS	PAGE NO.S
1	SAFETY	3 - 7
2	PART LOCATIONS	8
3	ASSEMBLY	9 - 11
4	FUELLING	12
5	STARTING & STOPPING PROCEDURE	13 - 14
6	OPERATING INSTRUCTIONS	15
7	MAINTENANCE	16 - 17
8	STORAGE & TRANSPORTATION	18
9	SPECIFICATION	19
10	TROUBLE SHOOTING	20 - 21
11	PARTS LIST	22
12	DECLARATION OF CONFORMITY	23
13	CONTACT DETAILS	24

1. SAFETY

1.1 General Safety Notes.

- 1.2 The operator of the machine is responsible for, and has a duty of care in making sure that the machine is operated safely and in accordance with the instructions in this user manual. Keep the manual safe and pass it on if the machine is loaned or sold to another user.
- 1.3 Please note the following safety points.
- 1.4 The machine should never be left in a condition which would allow an untrained or unauthorised person/s to operate this machine.
- 1.5 All due care and diligence should be taken by the operator for the safety of and with regard to those around whilst using the machine.
- 1.6 Some or all of the following - warning signs, symbols and/or PPE pictograms may appear throughout this manual. You **MUST** adhere to their warnings. Failure to do so may result in personal injury to yourself or those around you.



DANGER

Indicates a hazard, which, if not avoided, could result in serious injury or death.



WARNING

Indicates a hazard, which, if not avoided, could result in serious injury.



CAUTION

Indicates a hazard which, if not avoided, might result in minor or moderate injury.



NOTE

Indicates a situation that could easily result in equipment damage.

READ and keep the manual safe and pass it on if the machine is loaned or sold to another user.

You **MUST** fully understand all instructions to ensure you use and operate the machine safely.

Appropriate Personal Protective Equipment (PPE), **MUST** be worn at all times when operating or repairing the machine.



HAND
PROTECTION
MUST BE WORN



EYE
PROTECTION
MUST BE WORN



PROTECTIVE
CLOTHING
MUST BE WORN



HEARING
PROTECTION
MUST BE WORN



FOOT
PROTECTION
MUST BE WORN



HEAD
PROTECTION
MUST BE WORN



RESPIRATOR
MUST BE WORN



FACE SHIELD
MUST BE WORN



1.10 Carbon Monoxide (where applicable).


- 1.11 Carbon monoxide is a colourless and odourless gas. Inhaling this gas can cause death as well as serious long term health problems such as brain damage.
- 1.12 The symptoms of carbon monoxide poisoning can include but are not limited to the following;
Headaches, dizziness, nausea, breathlessness, collapsing or loss of consciousness.
- 1.13 Carbon monoxide poisoning symptoms are similar to flu, food poisoning, viral infections and simply tiredness. It is quite common for people to mistake this very dangerous poisoning for something else.
- 1.14 To avoid carbon monoxide poisoning **DO NOT** use Petrol/Diesel powered equipment inside any of the following; Home, garage, tent, camper van, mobile home, caravan or boat. This is not exhaustive and if you are in any doubt contact your dealer.
- 1.15 If you think you have or someone around you has been affected by carbon monoxide poisoning;
- 1.16 Get them fresh air immediately, by leaving the affected area or by opening doors and windows. If safe and practical to do so make sure that the machine is turned off.
DO NOT enter a room you suspect of having carbon monoxide present – instead call the emergency services.
- 1.17 Contact a Doctor immediately or go to Hospital – let them know that you suspect carbon monoxide poisoning.
- 1.18 **DO NOT** use in an enclosed area or moving vehicle.

1.20 General Fuel Safety (where applicable).



CAUTION

ALL FUELS ARE FLAMABLE

- 1.21 Fire Hazard – keep fuel away from all sources of ignition for example heaters. Lamps, sparks from grinding or welding.
- 1.22  **DO NOT** carry out hot work on tanks that have contained fuel.
- 1.23 **ALWAYS** keep the work area tidy.
- 1.24 **ALWAYS** clean up spills promptly using absorbent granules and a lidded bin.
- 1.25 **ALWAYS** dispose of waste fuels correctly.
- 1.30 **Fueling/De-fueling (where applicable).**



CAUTION

ALL FUELS ARE FLAMABLE

- 1.31 **ALWAYS** fuel and defuel in a well ventilated area outside of buildings.
- 1.32 **ALWAYS** wear correct, suitable and fit for purpose Personal Protective Equipment (PPE), suggested items are but not limited to safety gloves, overalls.




- 1.33 When fueling/de-fueling **ALWAYS** avoid inhaling fumes.
- 1.34 When de-fueling **ALWAYS** use a proper fuel retriever.



- 1.35 **ALWAYS** carry fuel in the correct and clearly marked container.

1.40 **Electrical Safety (where applicable).**


- 1.41 Electricity can kill – **NEVER** work on **LIVE/ENERGISED** equipment.
- 1.42 Prior to carrying out any maintenance work you **MUST** identify electrical isolation methods and isolate all electrical supplies.
- 1.43 Prior to use and with all electrical supplies isolated, you **MUST** check all electrical cables, plugs and connectors for the following;
- 1.44 Are intact and have no signs of damage, to include but not limited to bare wires, chaffing, cuts and loose wiring.
- 1.45 If there are any signs of damage, the damage item **MUST** be taken out of service until the damage has been repaired by an electrically competent person.
- 1.46 All trailing cables should be routed so as not to cause any kind of trip hazard.
- 1.47  **NEVER** work on or near electricity with wet hands, wet clothing and wet gloves.



1.50 **Batteries (where present).**

- 1.51 Batteries present a risk if they become damaged by the possible leaking of electrolyte. This electrolyte is an acid and can cause serious burn injuries. Care should be taken when working on or near them. **NOTE** the electrolyte may be in a liquid or gel form.
- 1.52 Should you come in to contact with electrolyte you should;
- 1.53 Remove all clothing contaminated with electrolyte. If you cannot remove then saturate them in water.
- 1.54 Get medical assistance as soon as possible. You must advise the medical staff of the type of acid.
- 1.55 Lead/acid battery = dilute sulphuric acid.

- 1.56 Nickel/cadmium = potassium hydroxide alkali electrolyte.
- 1.57 Use fresh running water to wash off excess electrolyte, continue this until medical assistance arrives. Make sure that you do not wash the electrolyte to another part of your body or face.
- 1.58 If electrolyte comes in to contact with Eyes the electrolyte needs to be immediately washed away with large amounts of water. Make sure that you do not wash the electrolyte to another part of your face or body.
- 1.59 Gasses from charging batteries are highly flammable and great care should be taken to charge in well ventilated areas.


- 1.59.1  There is an explosion risk if the battery terminals are short circuited, when connecting/disconnecting **ALWAYS** exercise great care so that the terminals or battery leads are **NOT** allowed to touch and cause a spark. **ALWAYS** use suitable insulated tools.

1.60 **Vibrations (where applicable).**

- 1.61 Prolonged use of hand held (operated) machines will cause the user to feel the effects of/from vibrations. These vibrations can lead to white finger (Raynaud's phenomenon) or carpal tunnel syndrome. This condition reduces the ability of the hand to feel and regulate temperature, causing numbness and heat sensations and may cause nerve damage and circulatory tissue death.
- 1.62 Not all factors that lead to white finger disease are known, but cold weather, smoking and other diseases that affect blood vessels and blood circulation as well as large and long-lasting impact of shocks are considered factors in the formation of white finger. Note the following to reduce the risk of white finger and carpal tunnel syndrome;
- 1.63 Wear gloves and keep your hands warm.
- 1.64 Take regular breaks.
- 1.65 All of the above precautions may help reduce the risk of white finger disease but not rule out the carpal tunnel syndrome. Long-term and regular users are therefore recommended to observe the condition of your hands and fingers. Seek medical attention immediately if any of the above symptoms should occur.

1.70 **Noise (where applicable).**

- 1.71 The operating noise of the machine can damage your hearing. Wear hearing protection such as earplugs or ear defenders to protect your hearing. Long-term and regular users are advised to have hearing checked regularly. Be especially vigilant and cautious when wearing ear protection because your ability to hear alarm warnings will be reduced.
- 1.72 Noise emissions for this equipment is unavoidable. Carry out noisy work at approved times and for certain periods. Limit the working time to a minimum. For your personal protection and protection of people working nearby it is also advisable for them to wear hearing protection.

- 1.73  See Certificate of Conformity section for Outdoor Noise declaration of conformity.

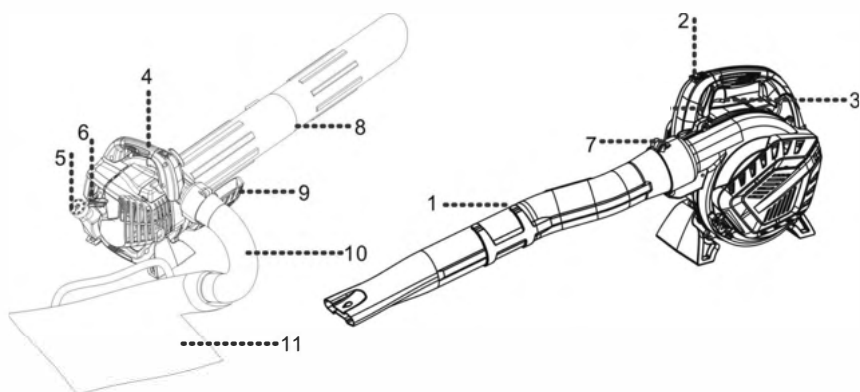
MACHINE SPECIFIC SAFETY

1.74 General Machine Safety.

- 1.75 Never add fuel to the tank whilst the engine is running or warm.
- 1.76 Wipe away any spilt fuel or oil with a clean cloth before operating.
- 1.77 Keep explosives or any other flammable products away from the machine at all times.
- 1.78 Do not use the blower/vacuum indoors or any enclosed space.
This machine produces carbon monoxide which can be fatal if inhaled.
- 1.79 Operate the machine at ground level.
- 1.80 The exhaust and engine body becomes hot whilst the engine is running and remains hot for a while after use.
- 1.81 Careless or improper use of any blower/vacuum may cause serious injury or be fatal.
If you are unsure how to use the machine you must read all of this manual and get your dealer to demonstrate its use.
- 1.82 **NEVER** point the blower/vacuum at any person or animal when in use.
- 1.83 Observe all applicable local safety regulations and standards.
- 1.84 Children should never be allowed to use a blower/vacuum.
- 1.85 Bystanders, especially children and animals, should not be allowed in to the area where a blower/vacuum is in use.
- 1.86 The operator is responsible for avoiding injury to third parties and damage to any property.
- 1.87 Do not lend or rent your blower/vacuum without the owner's manual.
Be sure that anyone who uses your blower/vacuum fully understands the information contained in this manual.
- 1.88 You must be fit to work on a blower/vacuum.
- 1.89 You should not operate a blower/vacuum if you are unwell or physically unable.
- 1.90 Do not operate the blower/vacuum if you are under the influence of any substances (alcohol, drugs etc.) which might impair vision, dexterity or judgement.
- 1.91 Only attachments supplied or expressly approved for use with your specific blower/vacuum model must be used.
- 1.92 No liability will be accepted for personal injury or damage to property caused by using unauthorised attachments.
- 1.93 Ensure all levers and switches move freely prior to operation.
- 1.94 Always wear the correct Personal Protective Equipment (PPE) for the blower/vacuum.



2. PART LOCATIONS & SYMBOLS



1. Blower tube
2. ON/OFF switch
3. Trigger
4. Handle
5. Fuel tank
6. Starter

7. Tube/collector bag connector
8. Vacuum tube
9. Housing of vacuum tube
10. Outlet tube
11. Collector bag

3. ASSEMBLY

3.0 Open the box and check that all parts are present as per the list below.



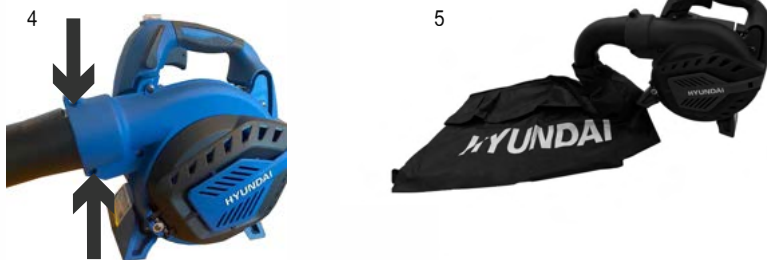
- | | |
|-----------------|------------------------|
| 1. Power head | 6. Fuel mixture bottle |
| 2. Blower tubes | 7. Collector bag |
| 3. Vacuum tubes | 8. Tool kit |
| 4. Outlet tube | 9. User manual |
| 5. Lanyard | |

VACUUM ASSEMBLY

- 3.1 Assemble the collector bag and tube attachment.
- 3.2 Take the curved outlet tube and insert it into the inlet hole at the top right of the collector bag. Use the velcro strap to tighten the bag around the wide end of the curved tube.



- 3.3 Using the supplied allen key, undo the bolts on the power head (4) and keep safe.
- 3.4 Place the end of the collector bag tube in to the power head housing (5), then push towards the machine as far as it can go.
- 3.5 Re-fit the power head bolts. (5).
- 3.6 To remove, reverse this process.



- 3.7 Hold the power head and push the screwdriver into the slot to release the fan cover (6).
- 3.8 Select the upper vacuum tube that has the micro switch strike plate attached (7).
- 3.9 Lift the fan cover and insert the upper vacuum tube (8) ensuring the strike plate aligns with the micro switch on the power head. Push the tube as far as it will go and then turn in an anti-clockwise direction until it clicks into place.
- 3.10 Attach the lower vacuum tube (9) using the 2 bolts provided in the tool kit.

6



7



8



9



BLOWER ASSEMBLY

- 3.11 Before assembly as a blower make sure that the machine is not assembled as a vacuum machine.
- 3.12 Using the supplied allen key, undo the 2 bolts on the power head (1) and keep safe.
- 3.13 Insert the upper blower tube into the power head as far as it can go and then replace the 2 allen bolts to secure.
- 3.14 Insert the lower blower tube (2) into the upper blower tube and secure with the cross head screw provided in the tool kit.
- 3.15 To disassemble reverse the above process.

1



2



3



4. FUELLING



WARNING

All fuels are flammable and must be handled and stored correctly. Always ensure there is adequate ventilation when handling fuels.



NOTE

This machine is equipped with a two stroke engine and must always be run using a mixture of petrol and two stroke oil. It is important to accurately measure the amount of oil to be mixed to ensure the correct mixture is obtained.

- 5.0 Mix fresh unleaded petrol with a good quality semi synthetic 2 stroke engine oil to a ratio of 40:1 using the mixing bottle provided and shake well.

Fuel (L)	Oil (ML)
5	125
10	250
15	375
20	500
25	625

- 5.1 Undo the fuel cap and carefully pour the fuel/oil mixture into the fuel tank.
- 5.2 Refit the fuel cap and ensure it is correctly tightened.
- 5.3 Clean up any spillages before starting the machine.



5. STARTING & STOPPING PROCEDURE

NOTE

Semi synthetic oil **MUST** be mixed with the petrol in the ratio 40 parts petrol to 1 part oil. i.e. 40:1 (see quick guide).

Before starting the engine you must check the following;

- 6.0 Check the work area is clear of large debris and all other persons or animals are not in the area to be cleared. You **MUST** remove any obstacles before starting work.
- 6.1

FROM COLD

- 6.3 Put the red choke lever (1) in the **START** (up) position.
- 6.4 Press the primer bulb (2) at least 8 times or until you see fuel fill the bulb.
- 6.5 Turn the power switch (3) to the 'I' ON position.



- 6.6 Pull the recoil starter handle (4) until you feel resistance.
- 6.7 Once you feel resistance, pull the recoil starter handle swiftly upwards.
- 6.8 Repeat steps 6.6 & 6.7 until the machine starts.



- 6.9 Once the engine starts, allow it to warm up before operation.
- 6.10 Run the engine at idle speed until operating temperature is reached, typically 2 to 3 minutes.
- 6.11 As the engine warms, open the choke (5) gradually by slowly pushing the choke lever down to the RUN position.



- 6.12 The machine should now be ready for operation.

FROM WARM

- 6.13 Turn the power switch (1) to the 'I' ON position.
- 6.14 Pull the recoil starter handle (2) until you feel resistance.
- 6.15 Once you feel resistance, pull the recoil starter handle swiftly upwards.



- 6.16 The machine should now be ready for operation.

STOPPING PROCEDURE

- 6.17 Release the trigger.
- 6.18 Allow the engine to idle for a few seconds.
- 6.19 Turn the power switch to the 'O' OFF position.
- 6.20 The machine should now turn off.

6. OPERATING INSTRUCTIONS

WARNING

Ensure you fully understand how to operate the blower/vacuum before using it. Always wear the appropriate Personal Protective Equipment (PPE) when using the blower/vacuum.

WARNING

NEVER point the blower/vacuum at any person or animal when in use.

WARNING

NEVER use the blower/vacuum indoors or in an enclosed space. This machine produces carbon monoxide which can be fatal even with minimal exposure.

- 7.0 Never operate the blower/vacuum without the vacuum or blower tubes or collection bag installed.
Use of an improperly assembled unit could result in serious personal injury.
- 7.1 To keep from scattering debris, blow around the outer edges of a debris pile.
Never blow directly into the centre of a pile.
- 7.2 Attach the lanyard to the collection bag as this gives more freedom of movement and helps support the weight of the machine.
- 7.3 Move the blower / vacuum from side to side along the outer edges of debris.
- 7.4 Hold the motor higher than the inlet end of the vacuum tube.
- 7.5 Always point the blower / vacuum tube downhill when working on uneven surfaces.
- 7.6 To avoid injury to the operator or machine, do not pick up broken glass, rocks, bottles, metal items or other similar objects.
- 7.7 Use the lowest throttle setting possible to reduce noise levels.
- 7.8 Regularly empty the collection bag to avoid blockages and prevent loss of power with the machine.
- 7.9 If the machine becomes blocked you **MUST** turn the blower / vacuum OFF and allow to cool, before attempting to clear.

7. MAINTENANCE

WARNING

Before performing any maintenance you **MUST** turn the blower / vacuum off, allow to cool and disconnect the spark plug cap to prevent accidental operation.

8.0 **Daily maintenance.**

- 8.1 Remove any dirt and debris from the blower exterior.
- 8.2 Inspect the engine, tank and hoses for possible leaks. Always repair any leaks before continuing work.
- 8.3 Inspect the cooling fins for build-up of dirt and debris, clean as required.
- 8.4 Inspect the entire machine for damage, loose or missing components or fastenings. Repair or replace as required.
- 8.5 Every 10 hours, or more frequently in dusty conditions, the air filter will require cleaning.
- 8.6 Undo the air filter cover retaining screw (1).
- 8.7 Remove the cover to reveal the air filter (2).
- 8.8 Remove the air filter (3).



- 8.9 Inspect the air filter element. If the filter element is distorted or damaged then replace it with a new one.
- 8.10 Wash the filter in clean fuel or soapy water and allow to dry.
- 8.11 Once dry, reinstall the filter element and replace the air filter cover.

- 8.12 Every 10 to 155 Hours.



CAUTION

DO NOT tighten or loosen the spark plug when the engine is hot.

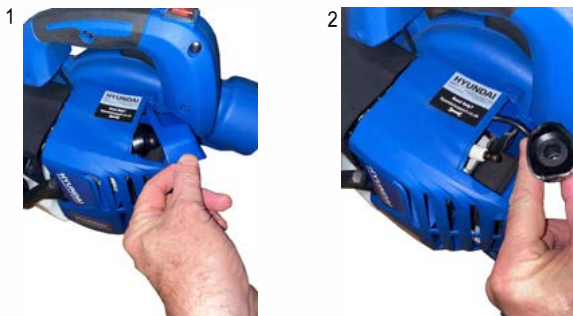
Incorrect spark plug installation can result in serious engine damage.

Never allow dirt or debris to enter the cylinder bore.

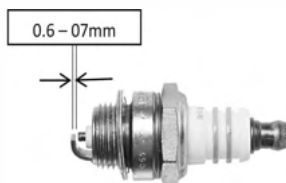
Before removing the spark plug, thoroughly clean the cylinder head area.

Allow the engine to cool before servicing the spark plug.

- 8.13 Unplug the spark plug lead (1) and using the plug wrench provided, remove the spark plug (2) by turning it anti-clockwise.



- 8.14 Inspect the spark plug and if damaged or visibly worn then replace with a Champion RCJ6Y gapped to 0.6 – 0.7mm.
- 8.15 Clean the spark plug electrode with a soft wire brush and reset the plug gap to 0.6 – 0.7mm



- 8.16 Reinstall the spark plug finger tight into the cylinder and then tighten with the plug wrench provided. **NOTE** if a torque wrench is available, torque the spark plug to 148 – 165 inch/pounds.
- 8.17 Change the fuel filter every 12 months.



WARNING

All fuels are flammable.

ALWAYS fuel and defuel in a well ventilated area.

ALWAYS wear the appropriate Personal Protective Equipment (PPE) when handling fuels.

- 8.18 Drain the fuel from the fuel tank (1) and dispose of correctly.
- 8.19 Using a wire hook, gently pull the fuel filter up through the fuel filler neck (2).

- 8.20 Replace the fuel filter with an authorised dealer part.



- 8.21 Adjusting the engine idle speed.



CAUTION

Blower / vacuum tubes and intake cover must be installed while adjusting the engine idle.

Engine idle speed will also be affected if either the intake cover or blower / vacuum tubes are blocked, damaged or incorrectly installed.

- 8.22 Run the engine at idle speed until operating temperature is reached. This usually takes 2 to 3 minutes.
- 8.23 Use a screwdriver to adjust the engine idle speed screw (1).
- 8.24 Turn the idle screw clockwise to **INCREASE** engine idle speed.
Turn the idle screw anti-clockwise to **DECREASE** engine idle speed.



- 8.25 Every 50 hours or if you notice a drop in performance.
- 8.26 Inspect the entire machine for any damage, including loose or missing components.
Repair or replace if necessary.

8. STORAGE & TRANSPORTATION

- 9.0 Storing for 30 days or longer.
- 9.1 Clean and inspect the machine.
- 9.2 Drain the fuel tank and clear the carburetor and fuel pipes by running the machine until it runs out of petrol.
- 9.3 Remove the spark plug and pour approximately 5ml of fresh engine oil into the cylinder bore through the spark plug hole.
Pull the recoil starter 2 to 3 times to distribute the oil over the cylinder walls.
Reinstall the spark plug.
- 9.4 Remove, clean and reinstall the air filter.
- 9.5 Store in a cool, clean area.
- 9.6 Transporting
- 9.7 **NEVER** transport the machine when full of fuel.
Fuel vapours can be fatal if inhaled and are a source of fire or explosion.
- 9.8 **ALWAYS** secure the machine to avoid damage from moving or falling.

9. SPECIFICATION

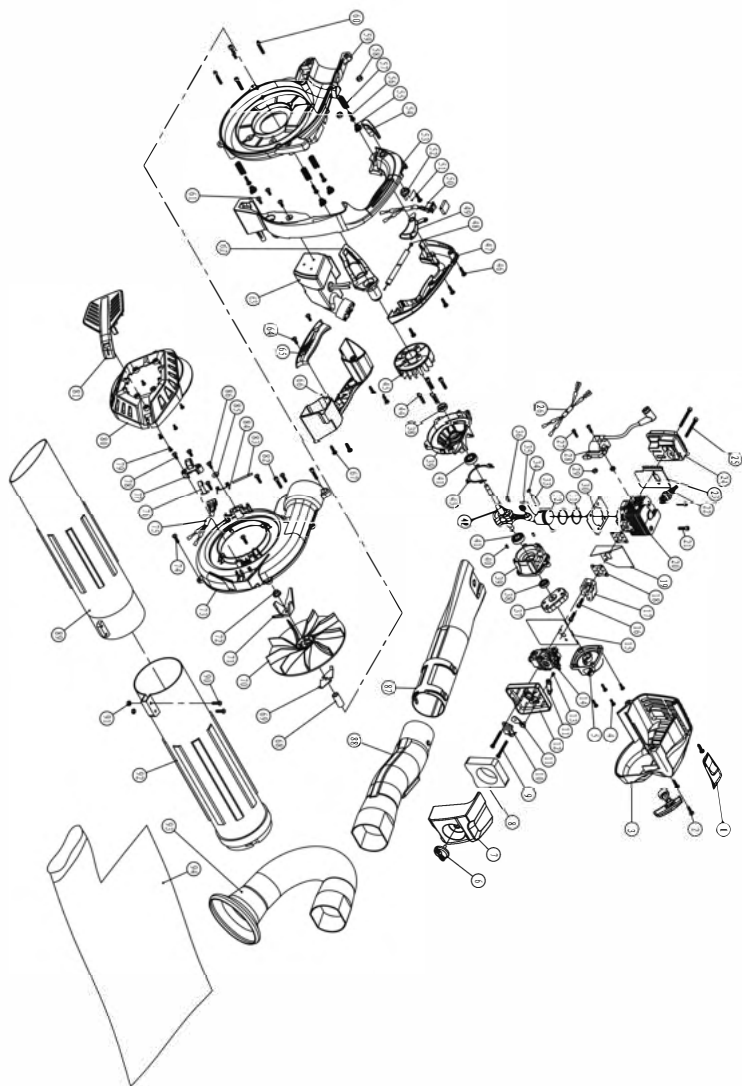
Displacement	25.4cc
Fuel	Unleaded Petrol 2-Stroke Semi-Synthetic
Fuel / Oil Ratio	40:1
Carburettor	Membrane Type Primer Pump
Ignition	CDI
Spark Plug	RCJ6Y
Starting Method	Recoil Pull Start
Fuel Tank Capacity	450ml
Rated Power	0.75kW @ 7500rpm
Air Speed	225km/h
Measured Sound Power Level	106.2dB(A)
Guaranteed Sound Power Level	113dB(A)
Weight	7kg

10. TROUBLESHOOTING A NON-STARTING ENGINE

Problem		Possible Cause	Solution
The spark plug does not spark	Spark plug	Spark plug electrode wet	Dry electrode
		Covered with carbon	Clean or replace spark plug
		Damaged insulation	Replace spark plug
		Spark gap incorrect	Adjust to 0.6 – 0.7mm
		Spark plug electrode burnt	Replace spark plug
	Magnetto	Damaged HT cable	Repair or replace
		Bad coil insulation	Replace coil
		Damage to wire coil	Replace coil
		The electronic firing unit is defective	Replace the defective unit
		Damaged HT cable	Replace HT cable
The spark plug is functioning correctly	Compression ratio OK and fuelling well	Too much fuel in the cylinder	Drain excess fuel
		Water or dirt in the fuel, stale fuel	Replace with fresh fuel
	Fuelling well but the compression ratio is poor	Cylinder piston ring worn or damaged	Replaced worn or damaged items
		The spark plug is loose	Tighten spark plug
	Carburetor not fueling	No fuel in the tank	Ass fuel – may require priming
		Filter gauze clogged	Clean filter gauze or replace
		Tank air hole clogged	Clean tank air hole

Problem	Possible cause	Solution
Compression ratio is OK	Filter clogged	Clean filter
	Air is able to pass through	Tighten fuel lines to prevent air from penetrating
	Air is able to pass through the carburetor connection	Tighten up
	Engine is overheating	Stop the engine and let it cool down. When you restart it, avoid long periods of heavy load and high revs
	Water in the fuel	Drain and replace fuel
	Carbon clogged exhaust	Clean exhaust
Engine overheating	Fuel mixture too lean	Adjust the carburetor
	Cylinder covered with carbon	Clean the cylinder
Engine knocking or making a noise	Fuel has gone stale or bad	Replace with clean, fresh fuel
	Carbon in the cylinder	Clean the cylinder
	Some engine parts are worn or damaged	Replace worn engine parts
Engine stops suddenly	The plug or plug wire	Firmly replace if loose
	Piston seized	Change the piston
	Spark plug covered in carbon	Clean or replace the spark plug
	Engine has run dry of petrol	Refill tank with fuel
Engine stops slowly	Carburetor clogged	Clean the carburetor
	The air hole in the tank is clogged	Clean the air hole
	Water in the fuel	Drain and replace with fresh fuel

11. PARTS LIST



13. DECLARATION OF CONFORMITY

13.0

EC Declaration of Conformity

We hereby declare that the machine detailed in this declaration complies to all the relevant provisions of the following EC directives.

- 2006/42/EC The Machinery Directive
- 2014/30/EU Annex II Electromagnetic Compatibility Directive
- 2016/1628/EC The Emission of Gaseous and Particulate Pollutants from internal Combustion engines
- 2000/14/EC Noise Emissions in the Environment by Equipment for use Outdoors.

And is in conformity with the applicable requirements of the following documents:

- EN ISO 15503:2009/A2-2015
- EN ISO 14982:2009

Declaration for 2000/14/EC Noise Emissions in the Environment by Equipment for use Outdoors.

Notified Body for EC Directive 2000/14/EC TÜV SÜD Product Service GmbH.

Model	Type	Engine Size	Measured Sound Power	Guaranteed Sound Power	Engine output
HYBV2600X	Leafblower/Vacuum	25.4cc	106.2dB(A)	113dB(A)	0.8kW

Product Details

Brand: Hyundai

Model: HYBV2600X

Description: Petrol grass trimmer

Name and address of technical documentation holder and EU distributor:

Genpower Ltd, Isaac Way, Pembroke Dock, Pembrokeshire, SA72 4RW, UK.

Signed by:



Roland Llewellyn, Managing Director

Date: 15/07/2020

14. CONTACT DETAILS

14.0 POSTAL ADDRESS	Genpower Ltd, Isaac Way, London Road, Pembroke Dock, Pembrokeshire. SA72 4RW. UK.
14.1 TELEPHONE	+44 (0) 1646 687880
14.2 FAX	+44 (0) 0164 686198
14.3 TECHNICAL EMAIL	aftersales@hyundaipowerproducts.co.uk
14.4 WEBSITE	www.hyundaipowerproducts.co.uk

15. MANUAL UPDATES & WARRANTY

- 15.0 Our manuals are constantly being reviewed and updated.
However if you find an error, omission or something you find unclear, please contact your dealer for assistance.
- 15.1 Our latest manuals are also placed online.
- 15.2 We reserve the right to make any modifications without prior notice whenever necessary.
- 15.3 Proof of purchase will be required before you make a warranty claim.
Full warranty terms and conditions can be found on the HYUNDAI POWER PRODUCTS website:

www.hyundaipowerproducts.co.uk

This image shows a single sheet of white paper with horizontal ruling lines. The lines are evenly spaced and run across the width of the page. There are no margins, text, or other markings on the paper.

HYUNDAI

POWER PRODUCTS

Importer:

GENPOWER LTD

Isaac Way, London Road

Pembroke Dock, UNITED KINGDOM, SA72 4RW

T: +44 (0) 1646 687 880 F: +44 (0) 1646 686 198

E: info@hyundaipowerproducts.co.uk

www.hyundaipowerproducts.co.uk

Imported/Distributed by GENPOWER LTD for The United Kingdom & Ireland

Licensed by Hyundai Corporation, Korea